

Username: _____ Password: _____



GETTING STARTED GUIDE

Gregory Enterprises, Burlington, NC USA

OVERVIEW

Installing the Software

The primary method to communicate with your RadonPRO unit is through a wireless connection on either your smartphone or tablet. Currently, RadonPRO is supported on Android and Apple platforms and can be downloaded from both the Apple App Store and the Google Play Store. Please search for RadonPRO to locate the application, and click to install.

Login to RadonPRO & Update Device List

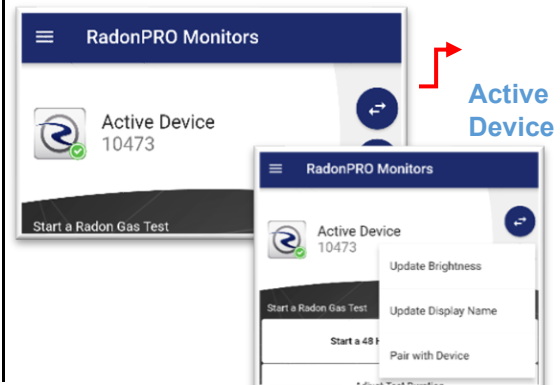
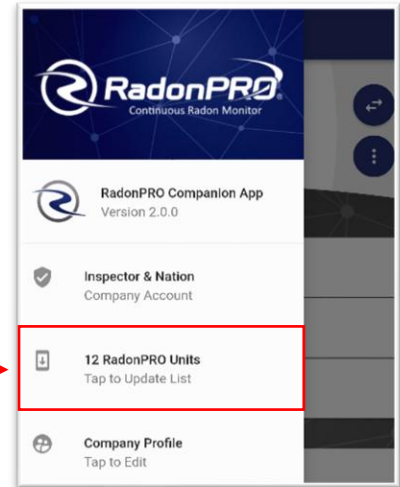
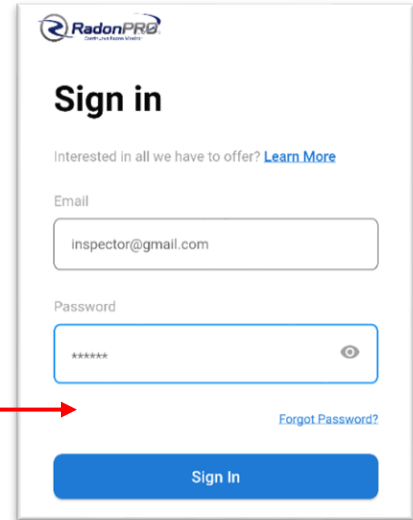
In order to use the RadonPRO app, you must login by using your provided username and password, and clicking "Login." The button will display the text "Logged In" when you have successfully done this action.

After you have logged in to the app, it will automatically retrieve your list of devices from the RadonPRO cloud server. You may manually check for new devices by expanding the side menu and click "Tap to Update List".

Pairing with a RadonPRO Unit

Locate your RadonPRO unit and turn the power to the device on. Ensure that you only have one RadonPRO turned on at a time during this process, and that you are not connected to any other devices such as a wireless headset or headphones.

The wireless pairing option is located under the Active Device Menu on the Main Screen of the RadonPRO app. Only press the pairing button for the device you currently have turned on. Ensure that you have Location Services Enabled. You will receive a notification when the device has paired. You may click "Tap to Update List" to reset device pairing.



Selecting a RadonPRO unit

On the Main Screen of the RadonPRO app, there will be a section listing your active RadonPRO monitor. From there, you may tap the Switch Active Device button to change to the Device # that you would like to control. When switching between RadonPRO devices, you must return to this menu and click to select the Device # corresponding to the RadonPRO unit that you wish to control. You can only control one RadonPRO unit at a time. The device # can be found on the ID Tag of your RadonPRO unit.

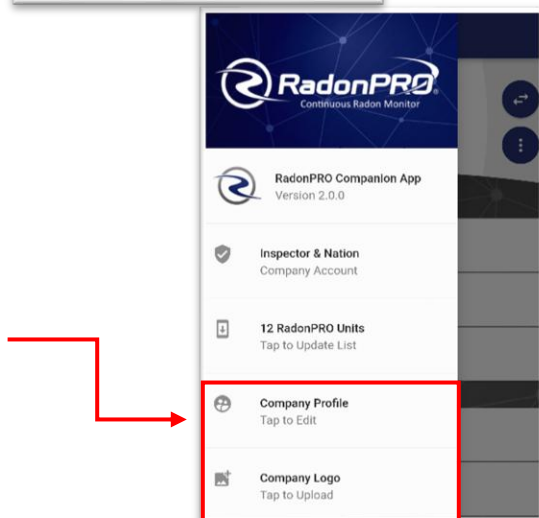
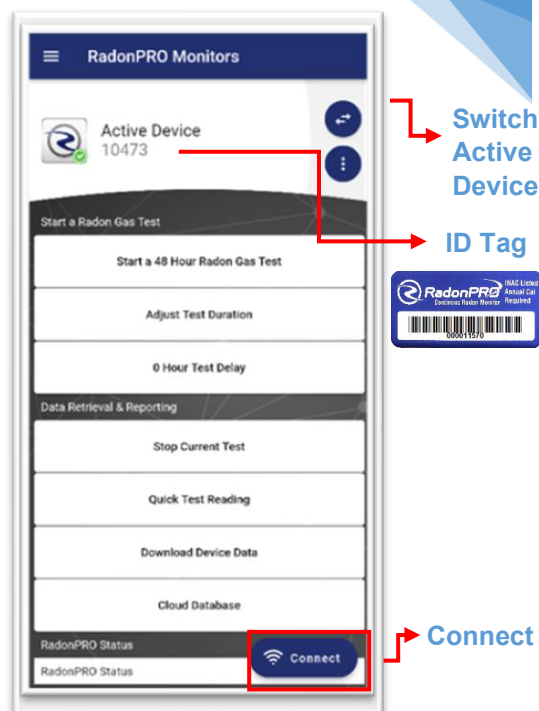
Connecting to your RadonPRO unit

Now that you have turned your RadonPRO unit on, enabled all wireless connections on your device, installed the RadonPRO application to your smartphone, logged into the application, and selected your RadonPRO unit through the application menu, you are ready to connect!

When your RadonPRO unit and your phone's wireless connections are on, the phone application will automatically attempt to connect when it is opened. Otherwise, you may click the connect button at the bottom right of the RadonPRO application to connect. Once the app confirms you are connected, then you are ready to Start a Test!

Adding Company Information & Logo

From the Side menu, you will notice two additional buttons. The Company Information screen allows you to setup custom user profiles, add your signature, and update your email address. The Company Logo screen allows you to upload your company so that it appears on future RadonPRO reports.



- Keyed Power Switch
- Charging Port
- Unit ID Label
- Calibration Tag



Starting a RadonPRO test

The default setting for a RadonPRO test is set at a 0 Hour Delay and a 48 Hour Test. You may click on the buttons labeled “0 Hour Test Delay” or “Adjust Test Duration” to increase or reduce this. After you have selected the test settings you would like, click “Start a 48 hour Test” at the top of the main screen. You should then see a confirmation on the screen of your RadonPRO unit that says “Test Started.” The RadonPRO unit will then log the test progress on the LCD.

At any time, you can reconnect to your RadonPRO unit and click “Stop Current Test” to stop the test or “Start a 48 hour Test” to restart the test with new settings. Be careful not to click start a new test when returning to collect your Radon test data after a 48 hour or similar test has completed. Note: In order to ensure successful completion of the test, no matter the charge level of the internal battery, you should place the RadonPRO unit where the external charger can be connected for the entire duration of the Radon test.

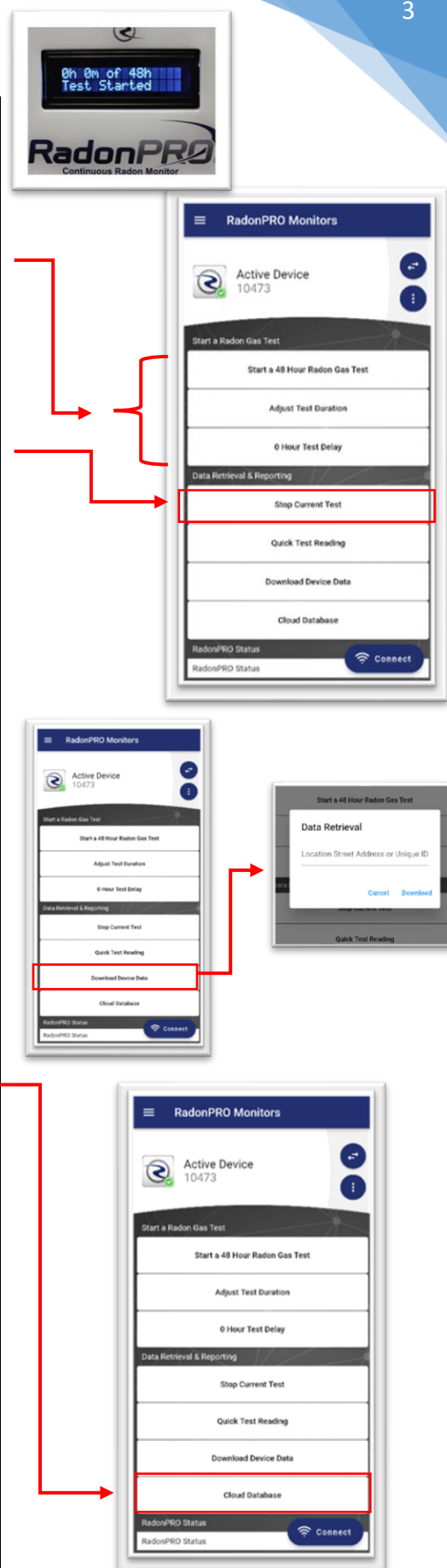
Downloading RadonPRO Data & Cloud Upload

In order to retrieve test data at any point during a test, you must do so using the RadonPRO application. Note: Retrieving test data will not stop a test that is currently in progress. The test will only stop after the time is up or if you click the stop test button. Connect your smartphone to your RadonPRO unit as described in this manual, and click the button labeled “Download Data.” You will be asked to enter the street address of the test, and then the test data will be transferred wireless to your smartphone from your RadonPRO unit.

At this point, you must click “Cloud Database” when you have either cell service or an internet connection. This will automatically upload your data to the Cloud. Note: You must upload data to the Cloud by clicking “Cloud Database” after downloading data from your RadonPRO unit before you download data from another RadonPRO unit to avoid risking any data loss.

Cloud Storage

After you have uploaded data to the Cloud, it can automatically be viewed with an Internet connection from your smartphone/tablet. You may search for tests at the top of the screen, or click “View” next to a test name to view data and generate PDF Reports.



Customer Management

After clicking “View,” there will be several options. Plots of temperature/humidity and Radon will be displayed. A black line will appear on the Radon plots to indicate that the device was moved or tilted during the test.

You may click “Delete Test” to delete the test you are viewing. A confirmation will appear after you click this button to confirm or cancel. Note: Test data cannot be retrieved after you delete it in this way.

You may click “Edit Test Info” to edit customer and test setup information that will be inserted into your report. You must click “Save Test Info” at the top in order to save any changes that you make. At any time, you may click “Email Report.” This will take the test data, and the customer/test information and generate a PDF report. A link to the report will be sent to the email address registered with your *RadonPRO* account. From there, you may download/save/print the PDF report.

Quick Test Reading

Due to the increased sensitivity in detection of *RadonPRO* units, we are able to offer a Quick Test feature. This is not to be used in a Radon report, but can be used to give you a quick/general idea of Radon levels in a particular location. Once connected to your *RadonPRO* unit, click “Quick Test Reading.” For the next 5 minutes, your *RadonPRO* unit will record data and display a reading on its display after the full 5 minutes. This should not be used officially when advising a customer; for that a full-test is required.

Adjusting Screen Brightness

There are three screen brightness settings that may be toggled through when your smartphone application is connected to your *RadonPRO* unit. On the Active Device Menu of your Active *RadonPRO* unit, click “Update Brightness” to toggle through these. You should see a change in the screen brightness on your device shortly.

Adjusting Display Name

On startup of your *RadonPRO* unit, a display or company name is automatically displayed. This name can be changed to any name that you prefer (up to 16 characters). Active Device Menu of your Active *RadonPRO*, click “Update Display Name.” A text prompt will appear, allowing you to enter a custom display name to appear on your *RadonPRO* unit.

The collage illustrates the user interface and hardware components of the RadonPRO system. It includes a search and test results table, detailed test reports with graphs, the physical RadonPRO units displaying 'Quick Grab' status and radon levels, a smartphone app interface for monitoring active devices, and a unit with a custom display name.

Regulatory & Compliance Information

This device complies with Part 15 of the FCC Rules. Operation is subject to the following two conditions:

1. This device may not cause harmful interference, and
2. This device must accept any interference received, including interference that may cause undesired operation.

Radio Frequency Interference Warning (Class A)

This equipment has been tested and found to comply with the limits for a Class A digital device, pursuant to part 15 of the FCC Rules. These limits are designed to provide reasonable protection against harmful interference when the equipment is operated in a commercial environment.

This equipment generates, uses, and can radiate radio frequency energy and, if not installed and used in accordance with the instruction manual, may cause harmful interference to radio communications. Operation of this equipment in a residential area is likely to cause harmful interference in which case the user will be required to correct the interference at their own expense.

Modifications Warning

The user is cautioned that changes or modifications not expressly approved by RadonPRO Monitors could void the user's authority to operate the equipment under FCC regulations.

Wireless Module Notice

This continuous radon monitor integrates a pre-certified, fully approved wireless radio module.

Contains FCC ID: A8TBM78ABCDEFGH